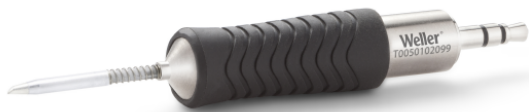


# RTP 012 B MS

Product no.: T0050102099



## Benefits

- › Short tip-to-grip distance Close working distance to the component for higher precision and maximum control
- › MIL-SPC / IPC standard (potential free) Reduces risk of damage to sensitive micro components and workpieces. No rework, lower total cost of ownership
- › Active tip technology Fastest heat-up and recovery time, sensor close to the solder tip, excellent heat transfer. No downtime, continuing workflow, excellent results
- › Digital tool for data storage Motion activated usage sensor for energy control and data storage
- › Patented tip & grip design Only soldering tip on the market which can be changed without a tool. 20% faster change than leading competitors.

**Technical Data**

Tip shape	Bevel Cut
Tip type	MS
Width in mm	1.2
Width in inches	0.047
Thickness in mm	---
Thickness in inches	---
Length mm	16.3
Length inches	0.642
Power	40 W
Packaging unit	1