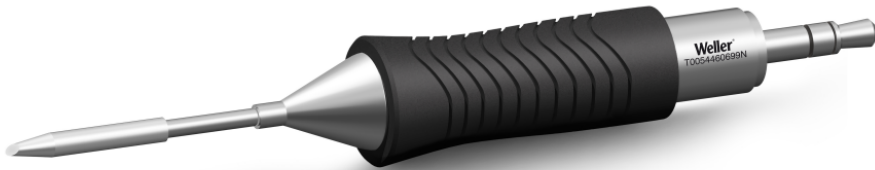


RTM 012 B

Product no.: T0054460699N



Benefits

- › Widest range of geometrics and sizes
Covers all standard applications. One tool meets all operational needs.
- › Active tip technology Fastest heat-up and recovery time, sensor close to the solder tip, excellent heat transfer. No downtime, continuing workflow, excellent results
- › Digital tool for data storage Motion activated usage sensor for energy control and data storage
- › Patented tip & grip design Only soldering tip on the market which can be changed without a tool. 20% faster change than leading competitors.

**Technical Data**

Tip shape	Bevel Cut
Tip type	---
Width in mm	1.2
Width in inches	0.047
Thickness in mm	---
Thickness in inches	---
Length mm	19
Length inches	0.748
Power	40 W
Packaging unit	1